

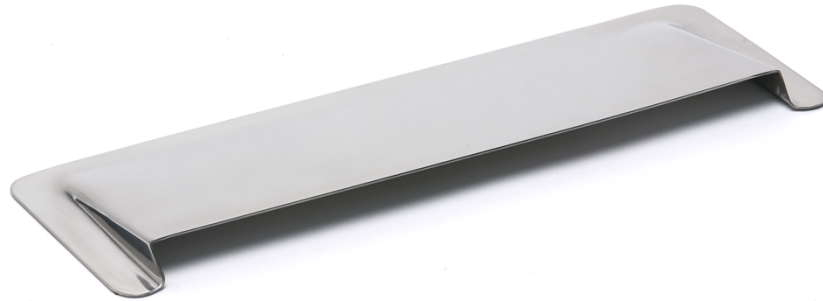


INSTALLATION INSTRUCTIONS

PART No. 30520 & 50520

MODEL No.

Vent Air Scoop



The hood vent air scoop is attached using 3M™ tape, so you must be very careful when installing this piece. Clean the surface of the cowl making sure all dirt and dust is removed. Peel the tape backing from the tape, carefully align the air scoop over the existing hood vent, then place the air scoop in place and press down.

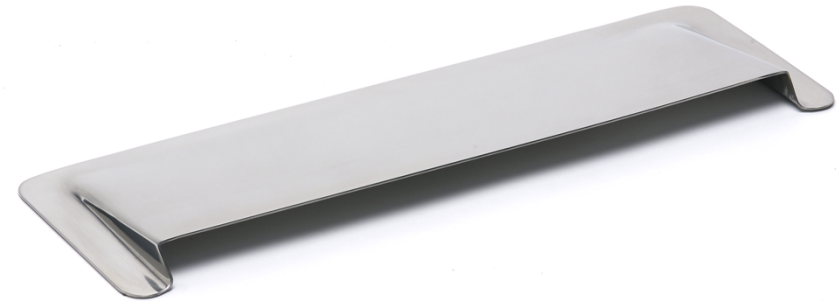


INSTALLATION INSTRUCTIONS

PART No. 30520 & 50520

MODEL No.

Vent Air Scoop



The hood vent air scoop is attached using 3M™ tape, so you must be very careful when installing this piece. Clean the surface of the cowl making sure all dirt and dust is removed. Peel the tape backing from the tape, carefully align the air scoop over the existing hood vent, then place the air scoop in place and press down.